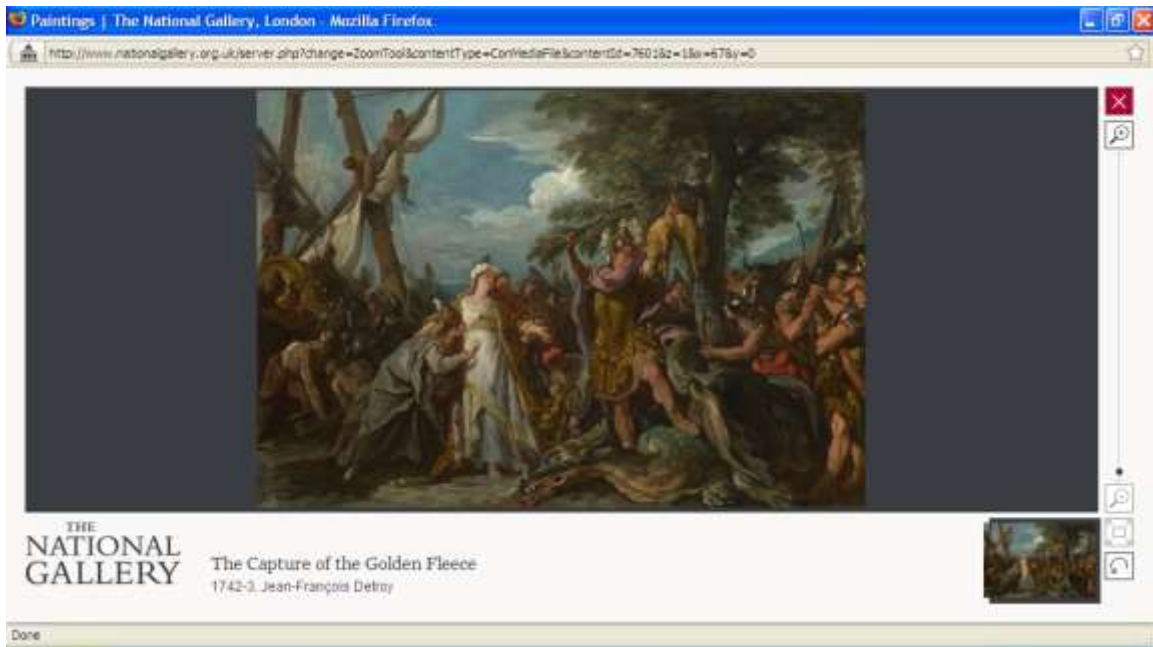


<http://bioweb2.pasteur.fr/phylogeny/intro-en.html>



1. from Athanasius Kircher's *Mundus subterraneus* (1664-1665)



2. Jean-François Detroy, "The Capture of the Golden Fleece" (1742-1743)



3. Nicolas Poussin, "The Companions of Rinaldo" (17c)



4. Hendrick Goltzius, "The Dragon Slaying the Companions of Cadmus" (1588)



5. Frederic Leighton, "Perseus and Andromeda" (1891)



6. Maxfield Parrish, "Alarums and Excursions" (1899)



7. "La gargouille de Rouen, et le privilege de Saint Romain" (1885)



8 illustration of a London "theatrical performance" (1864)



et pulchritudine tua **R**
proferre misericordiam et iustitiam

9. St. Margaret of Antioch (France, c. 1450-1460)



ratulenur et fetemur cū sumo
timudio iuonatur margante fe
tunt atq; passio per quam sponsi sui xpi
meruit con sortio. Ora pro nob. b. m̄gacita
eius qui hodierna die beatā ma
ritam uirginē ad celos per



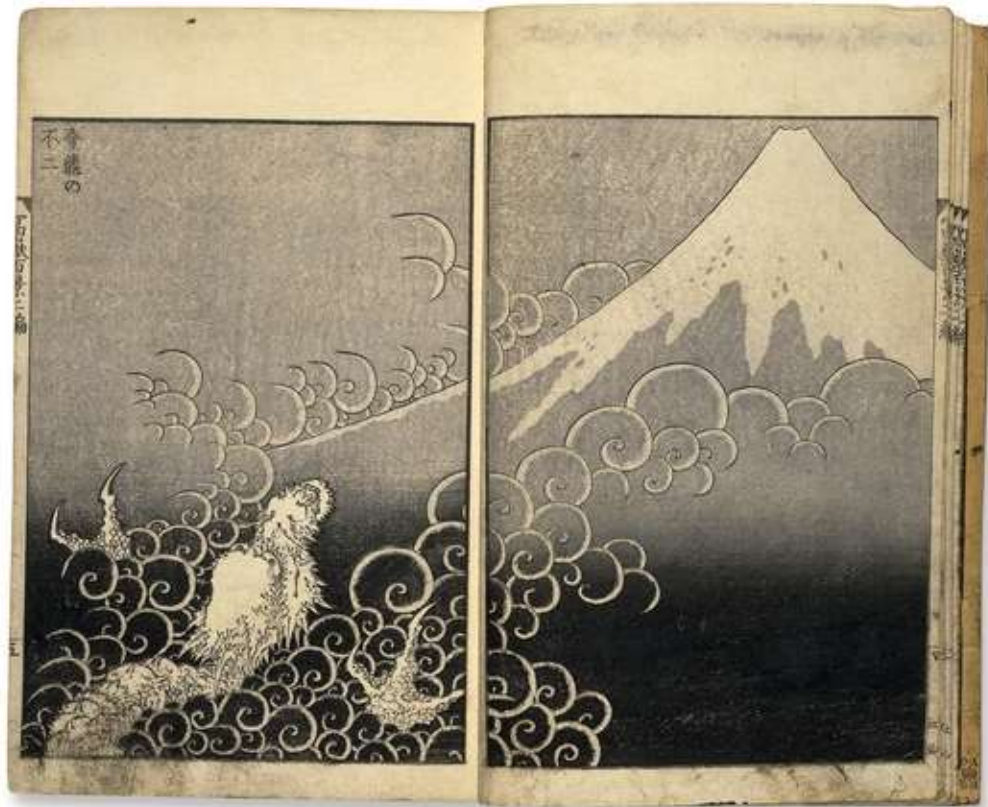
10. St. Margaret of Antioch (France, 1490-1500)



11. Saint Michael and the Dragon (Spanish, 15c)



12. Tani Bunch, Dragon in Clouds, a hanging scroll painting
Japan
Late Edo period, about late AD 1820s



13. Katsushika Hokusai, Dragon ascending Mount Fuji from 'One Hundred Views of Mount Fuji' (Fugaku hyakkei), a woodblock print



14. Japanese print

Japanese

Edo period

1857 (Ansei 4), 11th month

Woodblock print (nishiki-e); ink and color on paper

Vertical ôban triptych

NHK, Yoshitsune ten (2005), #193; Asahikawa Museum, Utagawa Kuniyoshi ichimon

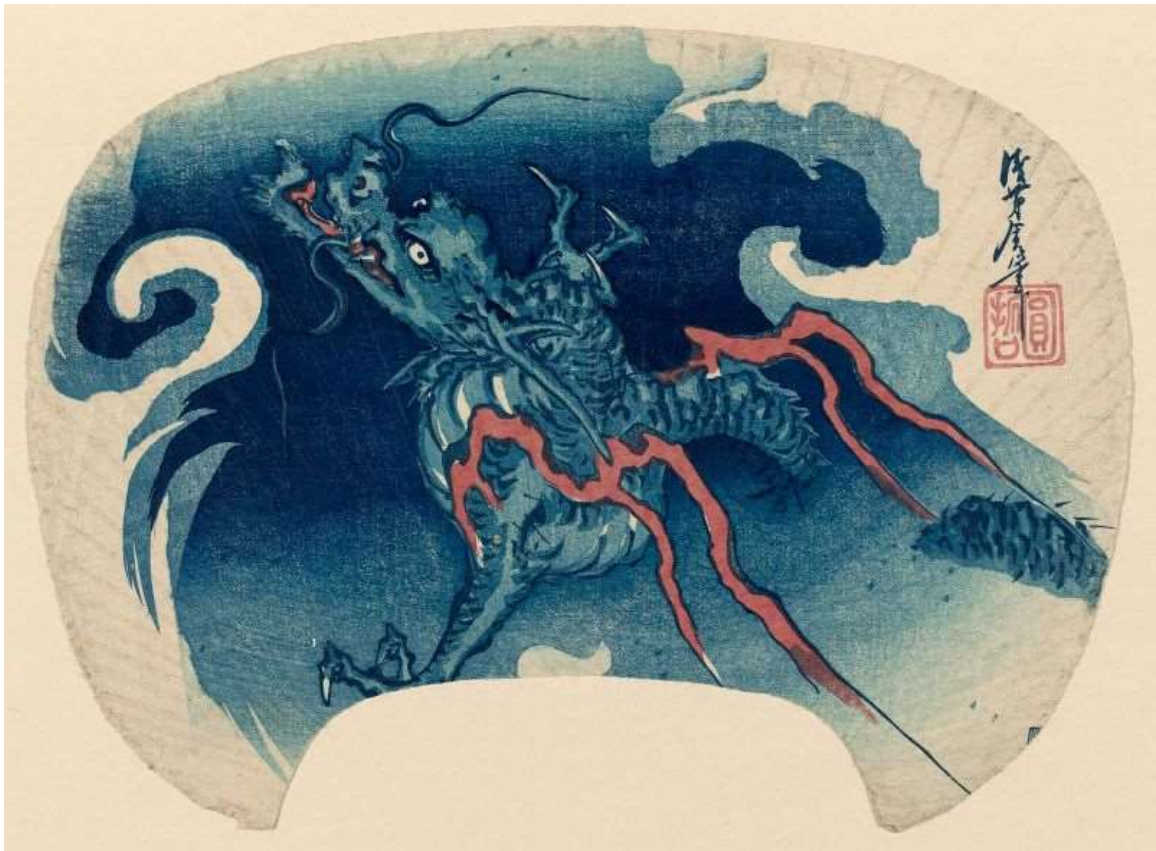
no zenbôten (2000), #3-7-3; Baren no kai, Zuroku kôki Utagawa-ha (1988), #115

Museum of Fine Arts, Boston



15. Gongsun Sheng, the Dragon in the Clouds (Nyāunryā Kā'sonshā'), from the series One Hundred Ghost Stories from China and Japan (Wakan hyaku monogatari)

Japanese
Edo period
1865 (Keiō 1), 9th month
Woodblock print (nishiki-e); ink and color on paper
Vertical ôban
Stevenson, Yoshitoshi's Strange Tales (2005), p. 64, #18
Museum of Fine Arts, Boston



16. Dragon in Clouds
Japanese
Edo period
Woodblock print (aizuri-e); color on paper
Uchiwa-e, cut from horizontal aiban sheet
Museum of Fine Arts, Boston



17. Articulated model of a dragon

Japanese

Late Edo Period to Meiji era

Second half of the 19th century

Forged and chiseled iron with gilding; the tongue of copper, the pupils of shakudô

Length x width: 194.3 x 37.5 x 71.1 cm (76 1/2 x 14 3/4 x 28 in.)

Museum of Fine Arts, Boston



18. Gongsun Sheng, the Dragon in the Clouds (Nyā»unryā» KĀ'sonshĀ'), from the series One Hundred and Eight Heroes of the Popular Shuihuzhuan (TsĀ»zoku Suikoden gĀ'ketsu hyakuhachinin no hitori)

Japanese

Edo period

about 1827–30 (Bunsei 10–Tenpô 1)

Woodblock print (nishiki-e); ink and color on paper

Vertical ôban

Klompmakers, Of Brigands and Bravery (1998), #10; Robinson, Kuniyoshi: The
Warrior-Prints (1982), list #S2.26

Museum of Fine Arts, Boston



19. Tamatori ama

Japanese

Edo period

Woodblock print (nishiki-e); ink and color on paper

Vertical ôban; 37.1 x 25.2 cm (14 5/8 x 9 15/16 in.)

Suzuki 1992, #204; Robinson, Kuniyoshi: The Warrior-Prints (1982), list #S1f.2?
Museum of Fine Arts, Boston



20. Dragon Out For Haifuki
Japanese
19th century
Ivory
H. .031
Museum of Fine Arts, Boston



21. Dragons in the Clouds, after Wang Ruoshui

Japanese

Edo period

first half of the 19th century

Hanging scroll; ink and color on silk

Image: 49.1 x 60.3 cm (19 5/16 x 23 3/4 in.)

KJM2-Kano-176

Museum of Fine Arts, Boston



22 Kanamono in the form of a dragon and jewel, with backplate engraved with waves
Japanese

Edo Period-Meiji Era

mid-late 19th century (before 1890)

Main material: gold; other metals: coral; silver backplate; decorative technique:
uchidashi, takabori, katakiri-bori

Overall: 6.8 x 0.9 cm (2 11/16 x 3/8 in.)

Museum of Fine Arts, Boston



23 Kanamono in the form of Choryo holding a shoe and sword and riding on a dragon,
with backplate

Japanese

Edo Period-Meiji Era

mid-late 19th century (before 1889)

Main material: silver; decorative technique: uchidashi, takabori

Overall: 6.7 x 0.9 cm (2 5/8 x 3/8 in.)

Museum of Fine Arts, Boston



24. Kanamono in the form of a dragon and jewel

Japanese

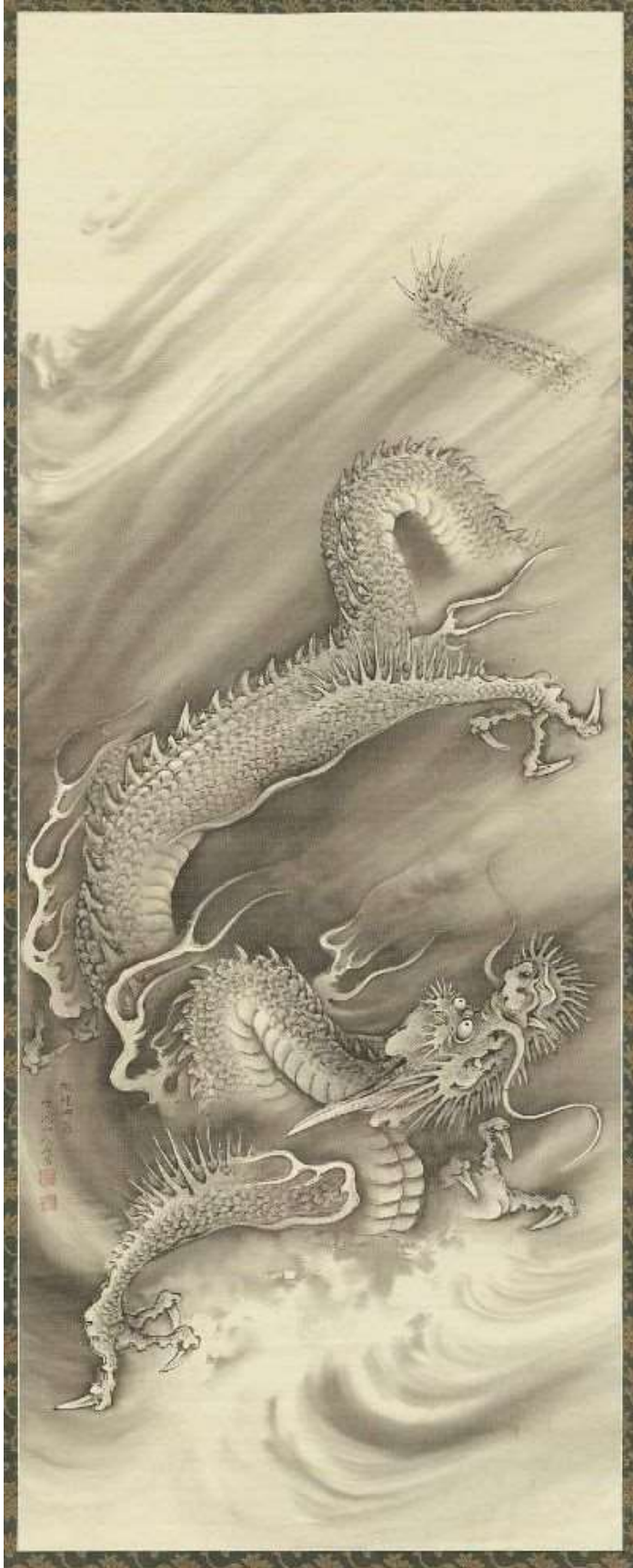
Edo Period-Meiji Era

mid-late 19th century (before 1889)

Main material: silver; other metals: gilding, coral; decorative technique: uchidashi, takabori, zogan

Overall: 6.7 x 0.7 cm (2 5/8 x 1/4 in.)

Museum of Fine Arts, Boston



25 Dragons

Japanese

Edo period

Hanging scroll; ink on silk

Image: 147.3 x 57.5 cm (58 x 22 5/8 in.)

Museum of Fine Arts, Boston



26. Dragon on waves
Japanese
Edo period

Woodblock print (nishiki-e); ink and color on paper
Vertical ôban; 39.7 x 26.3 cm (15 5/8 x 10 3/8 in.)
Museum of Fine Arts, Boston



27. Lifelike Dolls in the Inner Temple at Asakusa (Asakusa okuyama iki ningyô); reprint
of Tamatori-hime at the Dragon Palace (Tamatori-hime Ryûgû no zu)

Japanese

Edo period

1853 (Kaei 6), 6th month

Woodblock print (nishiki-e); ink and color on paper

Vertical ôban triptych

Mueller et al., *Competition and Collaboration* (2007), #116 (first edition); Suzuki 1992,
#206 (first edition); Robinson, Kuniyoshi: *The Warrior-Prints* (1982), list #T299

Museum of Fine Arts, Boston



28. Woodblock by Utagawa Kunisada II, 1860



29. "Arhat Panthaka with dragon. ... From ptg by Meichō, 15th century, Buddhist School." (from 1886 book)



30. Raphael – *St. George Fighting the Dragon*
1504-06 (220 Kb); Oil on wood, 28.5 x 21.5 cm (11 1/8 x 8 3/8 in); National Gallery of Art, Washington



31. Raphael - *St. George Fighting the Dragon*
1505 (180 Kb); Oil on wood, 30 x 26 cm (12 x 10 1/4 in); Musee du Louvre, Paris



32. Fight Between a Dragon and a Lion
Leonardo da Vinci



33. (1912)



34. Man fighting a three-headed dragon, from a 1912 Grimm's



35. from *The Violet Fairy Book* (1901)



Der Teufel und seine Grossmutter

11. 18. 5. 17. 1912

DRAGONS

VERLAG VON
J. B. NEUBAUER

36. "Der Teufel und seine Grossmutter" (1912)



37. St. George by Rogier van der Weyden (1400-64). Image from [Web Gallery of Art](#).



38. "Saint George Killing the Dragon" by Bernardo Martorell (1400-52), dating c.1430-1435, at the Art Institute of Chicago, Chicago, Illinois. Image from [Jim's Fine Art Collection](#)".



39. St. George fighting the dragon (40 x 36cm), the left panel of the Pesaro altarpiece by Giovanni Bellini, dating c.1471-74, at Musei Civici, Pesaro. Image from [Web Gallery of Art](#).



40. The painting "St. George and the Dragon" by [Carpaccio \(1455-1526\)](#), dating 1502-08, at the Scuola di San Giorgio degli Schiavoni, Venice. Scan by C. Gerten.



41. "St. George Kills the Dragon" by [Edward Burne-Jones \(1833-98\)](#), at the Art Gallery of New South Wales, Sydney. Scan by C. Gerten.



42. [Tintoretto](#)

Saint George and the Dragon

1555-58

Oil on canvas

158.3 x 100.5 cm

National Gallery, London



43. MARTORELL, Bernat

Saint George Killing the Dragon

1430-35

Tempera on wood, 141 x 96 cm

Art Institute of Chicago, Chicago



44. SODOMA, II

St George and the Dragon
about 1518

Wood

National Gallery of Art, Washington



45. UCCELLO, Paolo

St George and the Dragon

1458-60

Oil on canvas, 52 x 90 cm

Musée Jacquemart-André, Paris



46. Edward Burne-Jones, St George fighting the Dragon, a pencil drawing
England, around AD 1865



47. Salvator Rosa, Jason and the Dragon, an etching
Italy, AD 1663-64

Harvard Museum



48. Philips Galle

Dutch (Haarlem 1537 - 1612 Antwerp)

Daniel Feeds the Dragon a Deadly Morsel (Dan.14:26-27), 1565

Series: The History of Baal and the Dragon

Print

Engraving

sheet: 20.3 x 25.4 cm (8 x 10 in.)

NH 99; NH (Heemskerck)232, i/iii

Harvard Art Museum/Fogg Museum, Anonymous Loan, 31.1993.7

[Department of Prints](#)



49. Unknown Artist

Small Dragon in Foliage, late 16th century

Drawing

Ottoman, 16th century

Ottoman Empire, AH 680-1342 / AD 1281-1924

Black ink on off-white gold-flecked paper

9.5 x 10.3 cm (3 3/4 x 4 1/16 in.)

Creation Place: Turkey

Harvard Art Museum/Arthur M. Sackler Museum, Promised Gift of Stuart Cary Welch, Jr., 679.1983

[Department of Islamic & Later Indian Art](#)



50. Yashima Gakutei

Japanese (1786 - 1868)

Pictures of Otohime Riding Dragon and Pines at Sunset, from the series Ten Designs for the Honchô Circle (Honchôren jûban tsuzuki), Edo period, early 1820s

Print

Edo period, Late, 1789-1868

Ukiyo-e woodblock-printed "surimono" in "shikishiban" format; Ink, color, mica, metallic pigment and embossing on paper, with printed signature reading "Gakutei"

Paper: H. 21.1 cm x W. 18.8 cm (8 5/16 x 7 3/8 in.)

Signed: (printed) Gakutei

Creation Place: Japan

Harvard Art Museum/Arthur M. Sackler Museum, Gift of the Friends of Arthur B. Duel, 1933.4.1620

[Department of Asian Art](#)



51. Yashima Gakutei

Japanese (1786 - 1868)

Heavenly Figure Riding Dragon/ Dragon (Tatsu), from the series Twelve Zodiac Animals (Jûnishi), Edo period, circa 1820

Print

Edo period, Late, 1789-1868

Ukiyo-e woodblock-printed "surimono" in "shikishiban" format; Ink, color and metallic pigment on paper

Paper: H. 20.2 cm x W. 17.7 cm (7 15/16 x 6 15/16 in.)

Signed: (printed) Gakutei

Creation Place: Japan

Harvard Art Museum/Arthur M. Sackler Museum, Gift of the Friends of Arthur B. Duel, 1933.4.1711

[Department of Asian Art](#)



52. Totoya Hokkei

Japanese (1780 - 1850)

ENRYU NO DZU, MAN GIVING SALT TO A DRAGON.

Print

Edo period, 1615-1868

Ink on paper

Creation Place: Japan

Harvard Art Museum/Arthur M. Sackler Museum, Gift of the Friends of Arthur B. Duel,
1933.4.1900

[Department of Asian Art](#)



53. Totoya Hokkei

Japanese (1780 - 1850)

Chinese Warrior (J: Ryûhō) Killing a Dragon, Edo period, early 19th century

Print

Edo period, Late, 1789-1868

Ukiyo-e woodblock printed "surimono" in "shikishi" format; ink, color and metallic pigment on paper with printed signature reading "Nansotoka Hokkei ga"

20.7 x 18.7 cm (8 1/8 x 7 3/8 in.)

Signed: (printed) Nansotoka Hokkei ga

Creation Place: Japan

Harvard Art Museum/Arthur M. Sackler Museum, Gift of the Friends of Arthur B. Duel, 1933.4.1975

[Department of Asian Art](#)



54. Unknown Artist

Rustam Slays a Dragon (painting, verso; text, recto), folio from a manuscript of the Shahnama of Firdawsi

Series: Shahnama

Painting with text

Persian, 18th century

Ink, opaque watercolor and gold on paper

52 x 36 cm (20 1/2 x 14 3/16 in.)

Creation Place: Iran

Harvard Art Museum/Arthur M. Sackler Museum, Francis H. Burr Memorial Fund, 1948.61

[Department of Islamic & Later Indian Art](#)



55. Unknown Artist

Isfandiyar's Third Course; He Slays the Dragon (painting, verso), Isfandiyar's Second Course; He Slays the Lions (text, recto), folio from a manuscript of the Shahnama of Firdawsi

Series: Shahnama

Painting with text

Persian, 16th century

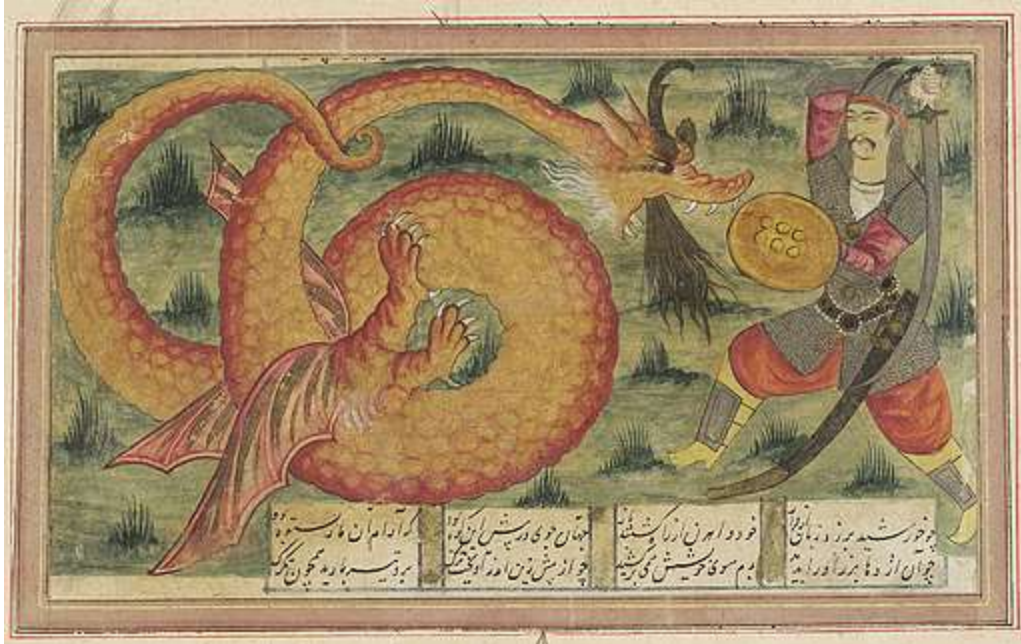
Ink, opaque watercolor and gold on paper

folio: 38.9 x 25.2 cm (15 5/16 x 9 15/16 in.)

Creation Place: Iran

Harvard Art Museum/Arthur M. Sackler Museum, Alpheus Hyatt Purchasing Fund, 1955.12

[Department of Islamic & Later Indian Art](#)



56. Unknown Artist

Isfandiyar Slays a Dragon, folio from an album of the Shahnama of Firdawsi

Series: Shahnama

Painting with text

Persian, 18th century

Ink and opaque watercolor on paper

21 x 32.1 cm (8 1/4 x 12 5/8 in.)

Creation Place: Iran

Harvard Art Museum/Arthur M. Sackler Museum, Gift of John Goelet, 1958.230

[Department of Islamic & Later Indian Art](#)



57. Rostam and Rakhsh Slay a Dragon, (from the *Shahnama*), (Iran, c. 1560-1570)



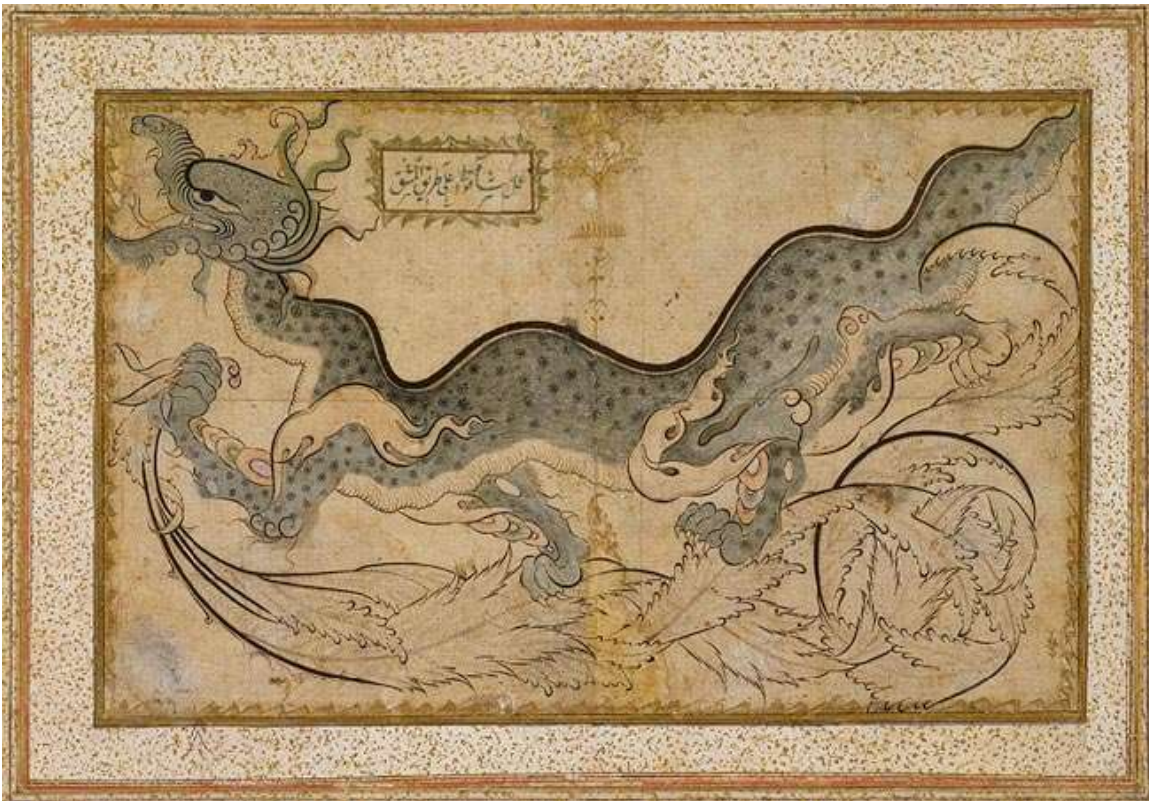
58. "Prophet Mohammed tranquilizes the dragon on the way of the caravan" (Turkish, 16c.)



59. Isfandiyar and dragon, from a copy of the *Shahnama* (c. 1330-1340)



60. Lion and Dragon fighting (Iran, 17c)



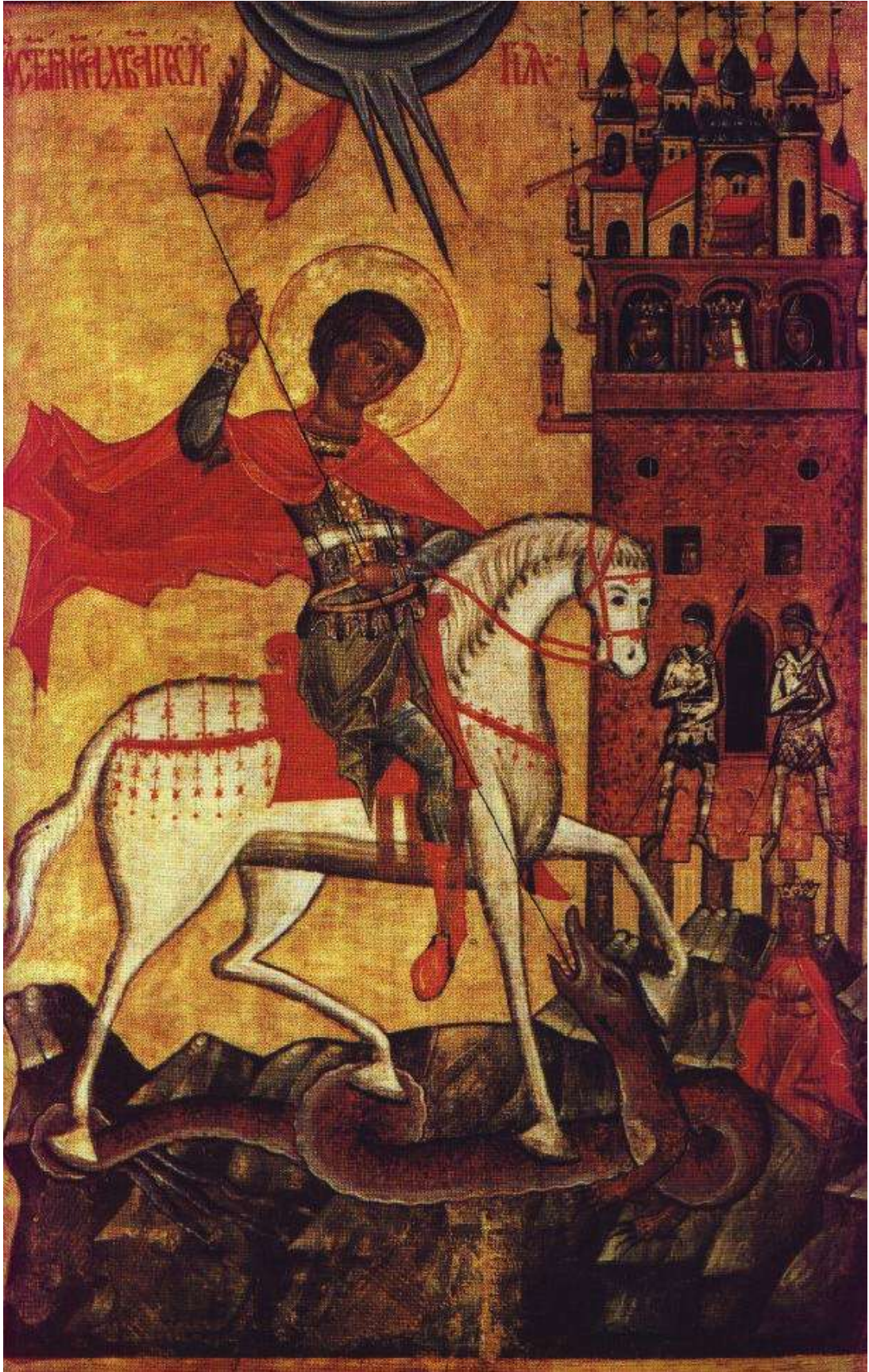
61. Ornamental drawing of a dragon (Ottoman, 16c)



62. Dragon in Foliage (Ottoman, c. 1565)



63. Ukraine, early 16c.



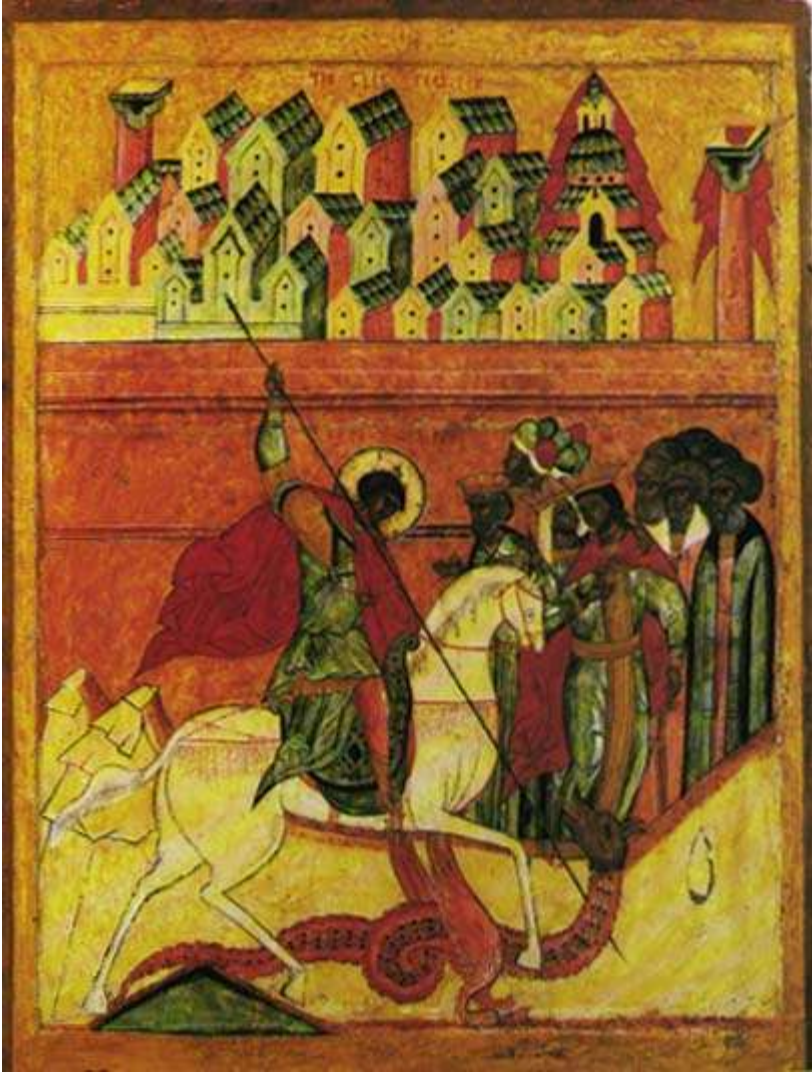
64. Ukraine, late 15c.



65. Russia, early 16c.



66. Ukraine, 15c.



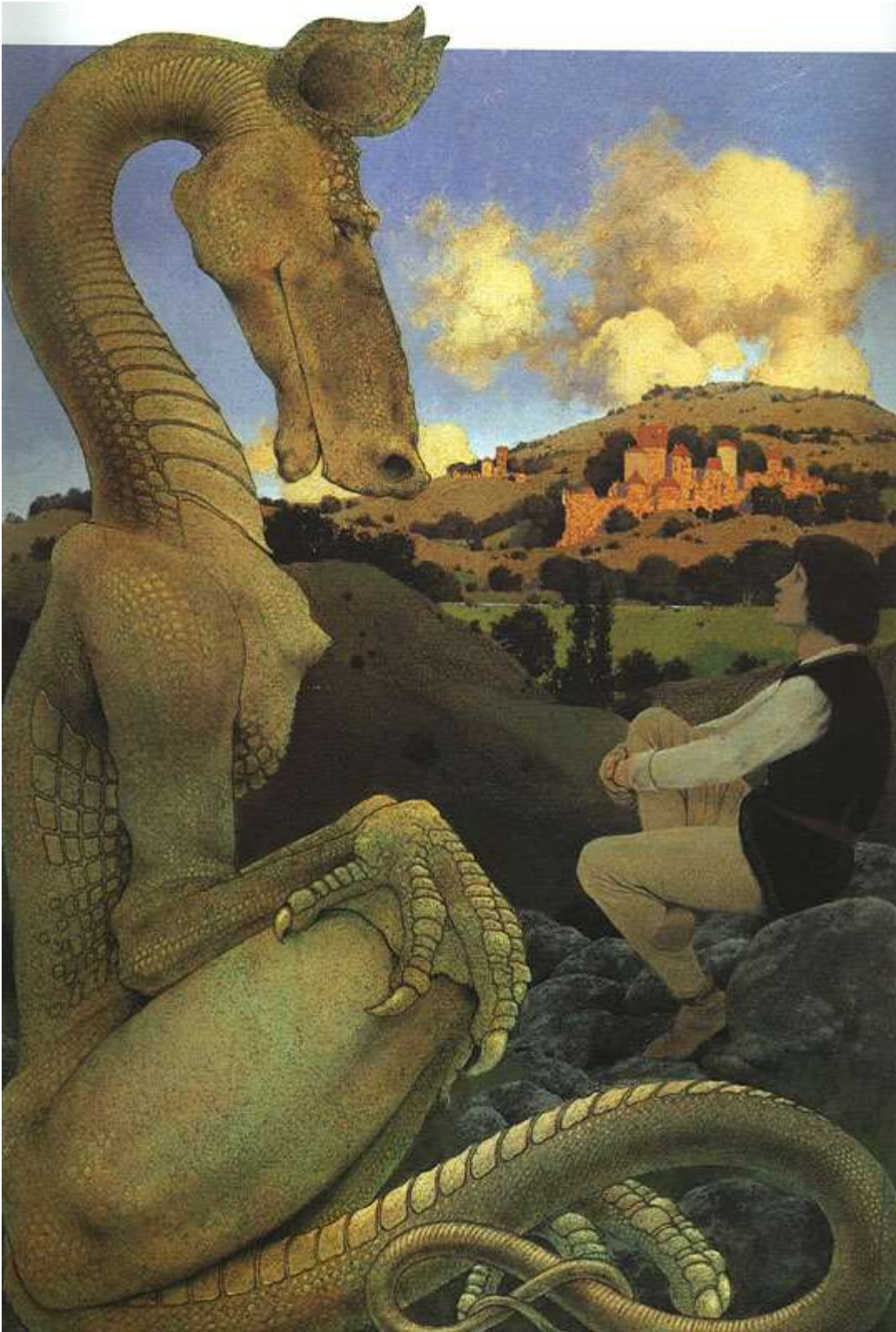
67. Russia, 16c.



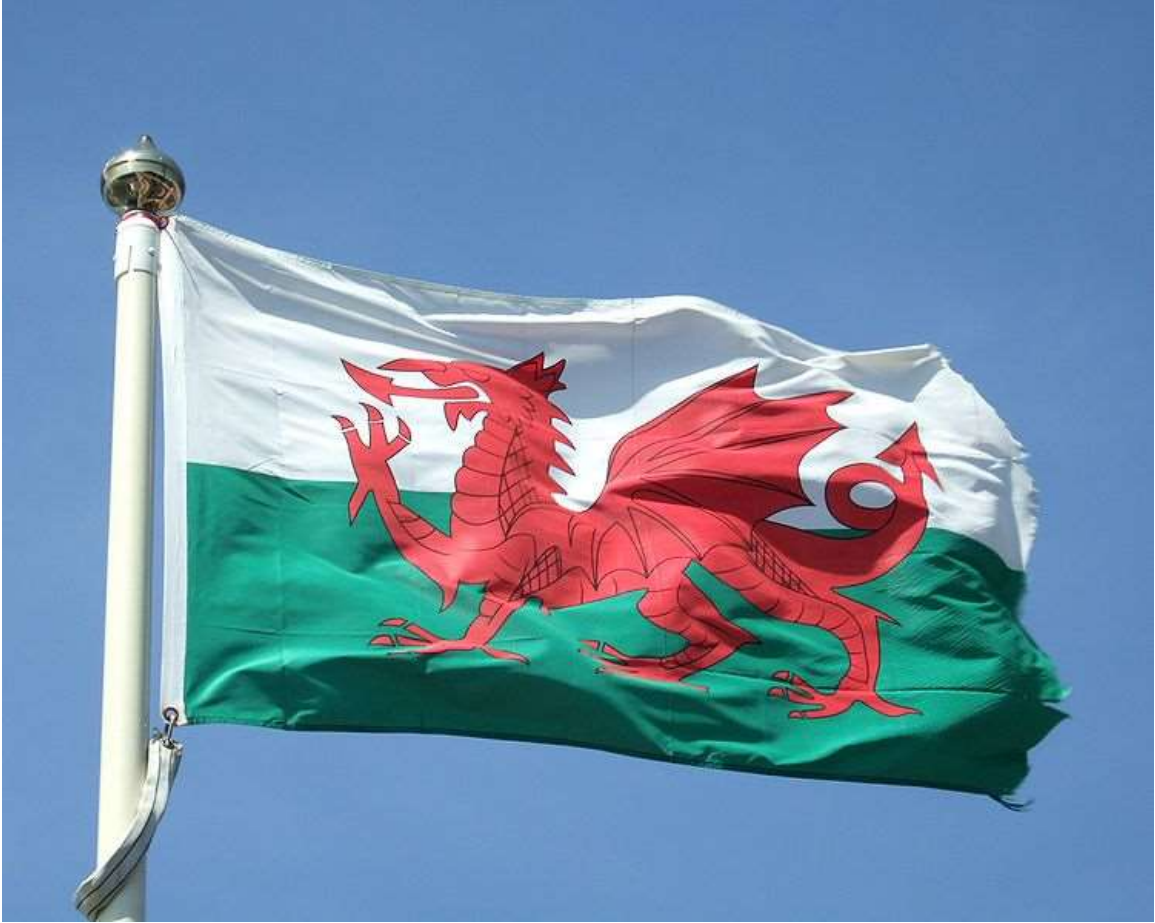
68. (Greece, 1660-80) by Emmanuel Tzanes



69. [Rosa, Salvator](#) *Jason Charming the Dragon* CGFA



70. [Parrish, Maxfield](#) *The Reluctant Dragon*, 1900-01 CGFA



71. Y Ddraig Goch (Wales flag)



72. Wood carving of the wyvern badge of [Kingswood College](#).



72. [Carlisle City Council](#)



74. [Cumbria County Council](#)



75. VALE ROYAL Additions : Northwich RDC, [Northwich UDC](#), Runcorn RDC (partly), Vale, Winsford